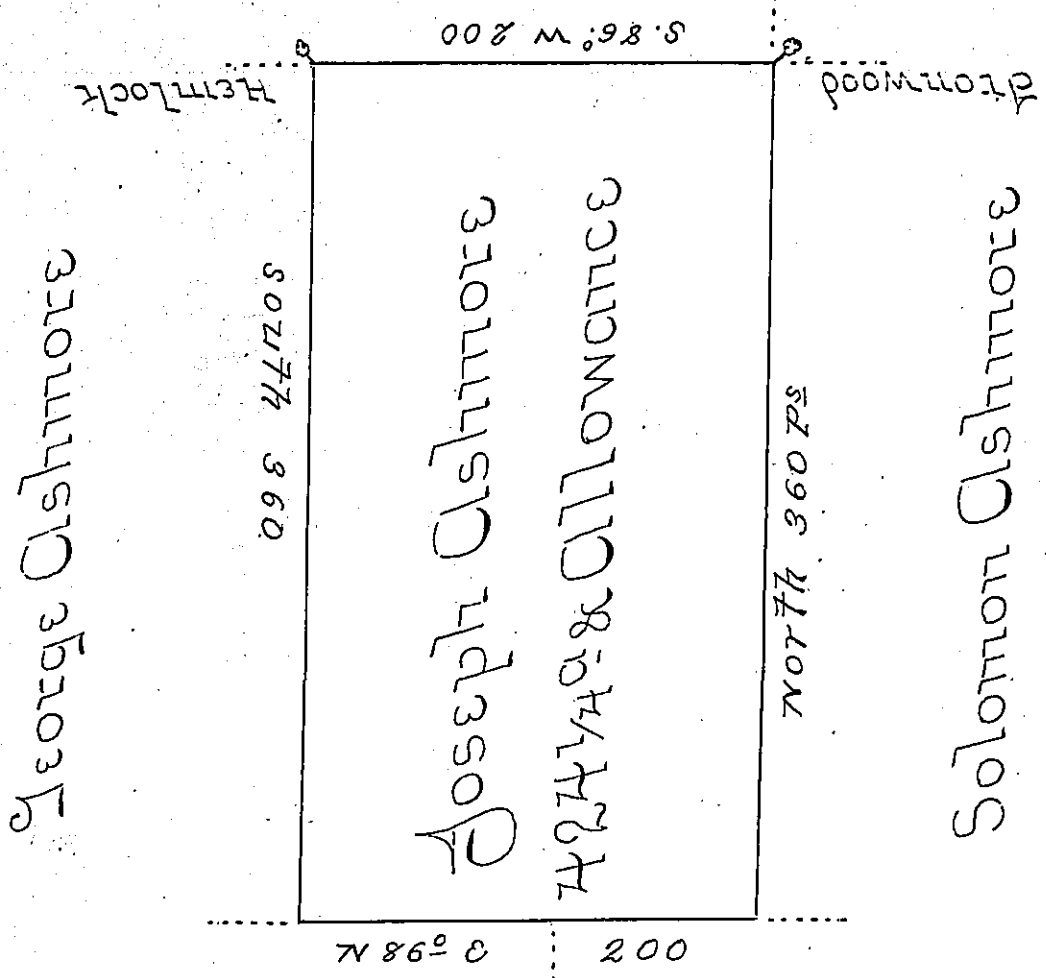


John Ashmore



Benedict Ashmore Harmer Langdale
C130-33

A Draught of a Tract of Land Called _____ situate
 adjoining (obl) of Solomon Ashmore and others in
 Stoke Township Northumber (obl) County Surveyd
 on the 23^d day of April 1785 for Joseph Ashm (obl)
 by Virtue of his Warrant dated the 2th day of April
 1785 Containing four Hundred and Twenty four
 Acres & 1/4 and allowance of (obl) P Cent for Roads &c

By Wm Gray JS.

To John Dukens Esq^r }
 Surveyor Gen^l }

IN TESTIMONY that the above is a copy of the original remaining on file in
 the Department of Internal Affairs of Pennsylvania, made
 conformably to an Act of Assembly approved the 16th day of
 February, 1833, I have hereunto set my Hand and caused
 the Seal of said Department to be affixed at Harrisburg,
 this first day of September 1903.

Geo R Brown
 Secretary of Internal Affairs.